



Stone
Innovations

PROCESSES AND INFO GUIDE



Prepared for

Plover: 715-345-1601

Rhineland: 715-350-6468

Appleton: 920-687-9500

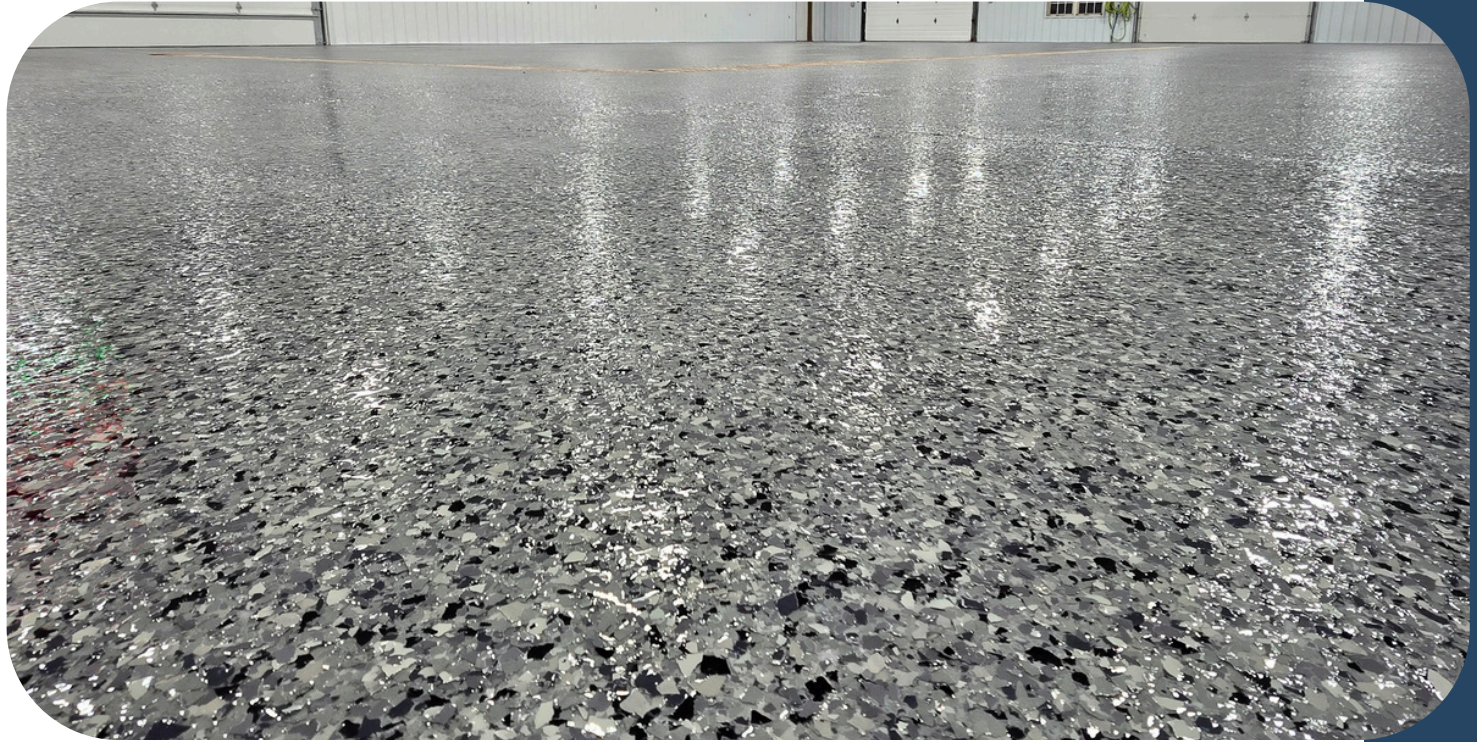
Madison: 608-838-1324

Presented by

Stone Innovations

**Coating
Information**

Built on Quality, Driven by Excellence



Commitment to Quality

We use only top-tier materials and advanced methods to ensure stunning, long-lasting results.

Industry Expertise

Adhering to rigorous standards, we combine precision with proven techniques to deliver exceptional performance.

Trusted Partnerships

Collaborating with leading suppliers and manufacturers, we provide innovative, cutting-edge solutions.

Customer-Focused Approach

We prioritize understanding your goals and challenges to craft solutions that align with your vision.

Completely Custom

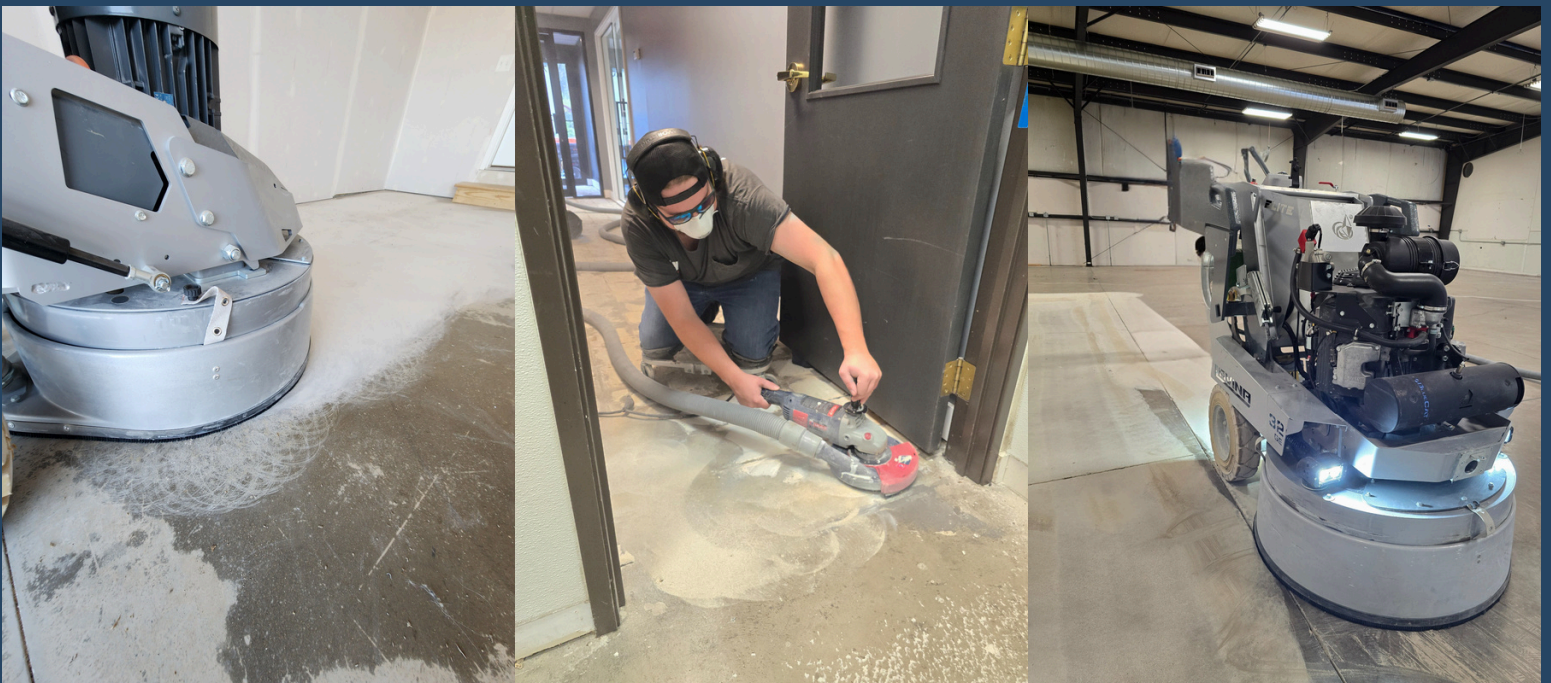
We work hard to make your vision come to life. All of our blends are totally custom and can be designed to fit your needs



Preparation: The Foundation of Lasting Results

Proper preparation is the key to ensuring your floor coating delivers the durability and performance you expect. Here's how we meticulously prepare your surface, step by step:

1. **Inspection & Moisture Testing:** We begin by thoroughly inspecting the surface to identify issues like cracks, pitting, or previous coatings that need attention. Moisture testing ensures the surface is ready for coating and prevents potential failures caused by trapped moisture.
2. **Surface Profiling:** Using professional-grade equipment, we perform diamond grinding and shotblasting to achieve the correct Concrete Surface Profile (CSP), typically a CSP 3 or higher. This step creates a textured surface that allows the coating to bond effectively.
3. **Repairing Imperfections:** Cracks, pitting, and surface damage are meticulously repaired using high-quality materials to restore the integrity of the surface. This ensures both a smooth appearance and a stable foundation for your coating.
4. **Cleaning the Surface:** After repairs, we thoroughly clean the surface to remove all dust, debris, and contaminants. This step is essential to ensure no particles interfere with the coating's adhesion.
5. **Final Preparation Check:** Before application, we conduct a final inspection to confirm the surface meets our high standards. Only when we're confident everything is perfect do we proceed with the coating.



Building the Perfect Surface

Once the surface is perfectly prepared, we begin the coating process with precision and care to ensure a flawless and durable finish. Here's how we build your coating system step by step:

1. **Applying the Primer:** We start with a high-quality primer designed to penetrate and bond with the prepared surface. This layer acts as the foundation, improving adhesion and sealing the substrate to prevent moisture or air from interfering with the coating system.
2. **Laying the Base Coat:** Next, we apply the base coat, which provides the strength and durability your floor needs. The base coat is specifically designed to fit your substrate type and demands. This layer is carefully squeegeed and rolled to ensure even coverage and consistency, setting the stage for a long-lasting, professional finish.
3. **Adding the Aggregate:** While the base coat is still wet, we broadcast your chosen aggregate, such as vinyl flakes or quartz, across the surface. This step enhances the coating's durability, slip resistance, and visual appeal. Aggregates can be customized to match your style preferences and needs, offering a range of colors and textures to suit your space.
4. **Removing Excess Aggregate:** Once the base coat cures, we thoroughly scrape and clean the surface to remove any excess aggregate, ensuring a smooth and even finish without loose particles.

This process ensures your floor not only looks stunning but also performs at the highest level. Every step is executed with care and precision to deliver a coating system that exceeds expectations.



Sealing the Strength: The Power of a Premium Topcoat

The final step in our coating process is applying a high-performance topcoat that locks in durability, enhances aesthetics, and provides long-term protection. While epoxy topcoats are an option, we recommend polyaspartic or urethane coatings for superior performance. Unlike epoxy, these topcoats offer faster curing times, UV stability (preventing yellowing), increased flexibility, and unmatched durability against abrasions, chemicals, and heavy traffic. Here's how we ensure a flawless topcoat application:

1. **Surface Preparation for Topcoat:** Before applying the topcoat, we carefully inspect and clean the surface to ensure it's free of loose aggregates, dust, and imperfections. This step ensures maximum adhesion for the final protective layer.
2. **Mixing and Application:** We prepare the topcoat using precise ratios to achieve optimal strength and consistency. The coating is then squeegeed and rolled onto the surface, penetrating and sealing every detail of the underlying layers. These coatings level quickly and cure with a seamless finish.
3. **Optional Additives:** For added safety and durability, we can incorporate anti-slip and strength additives into the topcoat, enhancing grip or durability without sacrificing aesthetics. This is especially beneficial for garages, patios, commercial spaces, and high-traffic areas.
4. **Final Cure and Quality Check:** Our topcoats cure rapidly, allowing for a faster return to service compared to epoxy. Once cured, we perform a final inspection to ensure a flawless, smooth, and durable finish that meets our high standards.

This final step not only protects your investment but also ensures your floor remains strong, vibrant, and resilient for years to come. At Polzin Epoxy Designs, we go beyond just applying coatings—we build solutions that last.



Your Questions, Answered: Everything You Need to Know

We know that investing in a high-performance floor coating is a big decision, and you may have questions about the process, materials, and long-term durability. We believe in transparency and educating our customers so you can feel confident in your investment. Below are some of the most common questions we receive, along with expert answers to help guide you through the process.

1. How long does the installation process take?

Our typical installation process takes one to two days, depending on the size of the project, the extent of surface preparation required, and the type of coating system being applied. Thanks to our use of polyaspartic topcoats, most floors are ready for light foot traffic within 24 hours and full use within 48 hours.

2. Why is surface preparation so important?

Proper preparation is the foundation of a long-lasting coating. Without thorough grinding and shotblasting, the coating won't bond properly, leading to peeling or premature failure. We use diamond grinding and shotblasting to achieve the correct Concrete Surface Profile (CSP 3 or higher), ensuring optimal adhesion and durability.

3. Will my new floor be slippery?

We prioritize both safety and aesthetics. While epoxy and polyaspartic coatings naturally have a smooth finish, we offer anti-slip additives that can be incorporated into the topcoat for added traction, making your floor safer without sacrificing its sleek appearance.

4. Can coatings be applied over cracks and damaged concrete?

Yes! Before applying any coating, we repair cracks, pitting, and imperfections to ensure a smooth, even surface. This step is crucial for both the appearance and longevity of your floor.

5. Will my floor turn yellow over time?

Not with our products! Epoxy coatings are prone to yellowing when exposed to UV rays, which is why we recommend polyaspartic topcoats that are UV-stable and will maintain their clarity and color for years.

6. Will my new floor be easy to clean?

Yes, they will! Our topcoats are non-porous meaning they will not stain easily and will clean with ease. We recommend just using soap and water with a mop, squeegee or floor scrubber

5. Is it dusty during the preparation process?

We use top of the line equipment to keep the dust next to a minimum! Using high powered dust collectors, air scrubbers and hoods we make sure to keep your space dust free! We work hard to maintain a clean and safe environment for you.

8. Is there a warranty on my floor?

Yes! We stand behind our work with a 1-year full coverage warranty and a 10-year application warranty. We also offer discounted maintenance and repair services to ensure your investment stays in top shape.

The Right Choice: Why Our Epoxy & Polyaspartic System Outperforms Polyurea

Not all coatings are created equal. While some companies push polyurea coatings as a quick-fix solution, they often fail to mention the drawbacks. We use a proven epoxy and polyaspartic system that provides better adhesion, durability, and long-term value. Here's why our process is the smarter choice:

- **Superior Adhesion:** *Our epoxy primer bonds deep into the concrete, creating a rock-solid foundation. Polyurea is often applied without a proper primer, leading to peeling and premature failure.*
- **Stronger, More Durable:** *Our epoxy base coat provides structure, while our polyaspartic topcoat offers unmatched flexibility and abrasion resistance. Polyurea's thinner application makes it more prone to wear over time.*
- **Flawless Finish:** *Our controlled broadcasting and sealing process ensures a smooth, professional look. Polyurea cures too quickly, often resulting in uneven texture and roller marks.*
- **UV Stability:** *Our 100% UV-resistant polyaspartic topcoats prevent yellowing and fading. Many polyurea coatings discolor over time, especially in sun-exposed areas.*
- **Proper Curing for Maximum Strength:** *We allow each layer to cure properly, ensuring long-term performance. Polyurea's "one-day application" often sacrifices quality for speed, leading to weaker adhesion and durability.*
- **Better Long-Term Value:** *While epoxy with polyaspartic is a premium option, it lasts longer and requires fewer repairs than polyurea, making it the better investment over time.*

We don't take shortcuts. Our epoxy and polyaspartic system delivers lasting strength, beauty, and reliability, ensuring your floor stands the test of time. Don't settle for a quick fix—choose a solution built to last.



Warranty & Ongoing Service Commitment

We stand by the quality and durability of our flooring solutions, offering an industry-leading warranty program designed to provide peace of mind and long-term value.

10-Year Wear and Tear Warranty

This warranty provides full coverage against defects in materials and installation workmanship for ten years from the completion date. Should any issues arise, we will promptly address them, ensuring your floor meets the highest standards of performance and satisfaction.

Lifetime Adhesion Guarantee

We guarantee that your coating will maintain proper adhesion to the substrate under normal conditions. This ensures the longevity and durability of your investment, giving you confidence in the structural integrity of your flooring system.

Maintenance & Repair Discounts

As part of our commitment to your satisfaction, we offer exclusive pricing on touch-ups, refinishing, and preventative maintenance services. These services are designed to extend the lifespan of your floor and keep it looking as good as the day it was installed.

Customer Support & Technical Assistance

Our team of experts is always available to provide guidance and troubleshooting for any concerns you may have. Whether it's a technical question about maintenance or advice on optimizing your floor's performance, we're here to help.

Additional Customization Options

For customers looking to further enhance their flooring, we offer optional warranty extensions and upgrades tailored to high-traffic or extreme-use environments. These options ensure additional coverage and enhanced durability for unique project needs.

Our warranty program is a testament to our confidence in the quality of our work and our dedication to your long-term satisfaction.



Maintenance & Care Guide: Maximizing Longevity



Your epoxy and polyaspartic flooring is built for durability, but proper maintenance extends its lifespan and preserves its finish. Follow these essential care tips:

- **Routine Cleaning:** Use a pH-neutral cleaner and microfiber mop to remove surface debris. Avoid harsh solvents that could degrade the protective coating. For tough stains, use warm water with mild detergent.
- **Surface Protection:** Apply felt pads under heavy furniture, avoid dragging equipment, and place entryway mats to minimize dirt accumulation. Protective floor coverings help preserve high-traffic areas.
- **Chemical & Stain Resistance:** Though our coatings offer high chemical resistance, spills of oil, gasoline, and corrosive substances should be cleaned immediately to maintain surface integrity.
- **Thermal & Moisture Considerations:** Polyaspartic coatings endure temperature fluctuations, but excessive moisture should be managed through proper drainage and climate control.
- **Periodic Re-Coating:** High-traffic areas may benefit from scheduled maintenance coatings, reinforcing abrasion resistance and extending the floor's longevity.
- **Extended Warranty & Maintenance Plans:** Take advantage of our specialized maintenance programs, including professional inspections, refinishing services, and tailored aftercare solutions.